



‘Welcome to Year 5’

Information for Parents/Carers



## Class 5NG



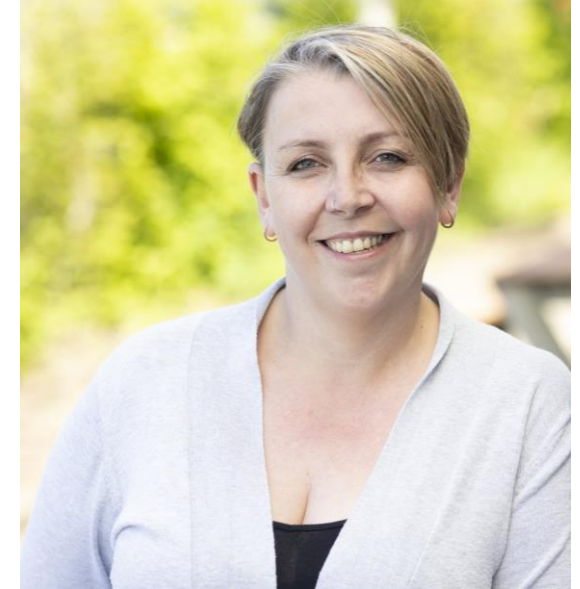
Miss Newell  
**Teacher**



Miss Gammage  
**Teacher**



Miss Williams  
**Schools Direct  
teacher**



Mrs Wilson  
**TA**

## Class 5JU



Miss Uren  
**Teacher**



Mrs Bromilow  
**TA**



Mr Porter  
**LSA**

## Class 5NG Timetable

Monday	Tuesday	Wednesday	Thursday	Friday
Whole Class Reading English/Maths Independent Reading	Whole Class Reading English/Maths Spelling	Whole Class Reading English/Maths Independent Reading	Whole Class Reading English/Maths Spelling	Starfish of the Week Assembly SMSC Independent Reading
REGISTRATION 8:55am BREAK 11:00-11:15am Arithmetic Practice LUNCH 12:30-1:30pm REGISTRATION				
English/Maths	English/Maths	English/Maths	English/Maths	History
DEAR	DEAR	DEAR	Art	DEAR
Computing	History	Science	PE	RE
SMSC Assembly	Drop Everything and Read			Positive Behaviour Time
HOME TIME 3:20pm				

TODAY  
is the day to  
learn something  
NEW

Making  
Aspirations  
Possible





## Class 5JU Timetable

	Monday	Tuesday	Wednesday	Thursday	Friday
Early Morning Learning	REGISTRATION 8:55am				
Whole Class Reading	English/Maths	English/Maths	English/Maths	English/Maths	Starfish of the Week Assembly
Independent Reading	Independent Reading	Spelling	Independent Reading	Spelling	SMSC
BREAK 11:00-11:15am					
Arithmetic Practice	REGISTRATION				
English/Maths	English/Maths	English/Maths	English/Maths	English/Maths	History
LUNCH 12:30-1:30pm					
DEAR	Science	DEAR	Computing		SMSC Assembly
History			Spanish		Drop Everything and Read
PE	Art		HOME TIME 3:20pm		
DEAR	RE		Positive Behaviour Time		

TODAY  
is the day to  
learn something  
NEW

Making  
Aspirations  
Possible



Maths and English are taught four times a week.

Children stay in their classes for these lessons and the teachers swap rooms.

For English, they will be taught by Miss Newell and for Maths, they will be taught by Miss Uren.

PE is every Thursday. This will change throughout the Academic Year. Please ensure that your child comes to school in their PE kits.

PE kit should consist of their house polo PE shirt, black shorts/tracksuit bottoms and plimsolls or trainers please.

**Term 1**

**Benin Kingdom**



The kingdom of Benin began in the 900s when the Edo people settled in the rainforests of West Africa. By the 1400s they had created a wealthy kingdom with a powerful ruler, known as the Oba. Gradually, the Obas won more land and built up an empire. For 200 years Benin was very successful, but in the 1600s the Obas started to lose control of their people. By the 1800s Benin was no longer strong or united. The kingdom came to a sudden end in 1897, when a British army invaded and made it part of the British Empire.

**Term 2**

**Informal Settlements**



While the number of people living in the five biggest slums in the world amounts to 5.7 million, this is only just a drop in the ocean. Today, it is estimated that about 900 million people live in slums. But most experts agree that if you include different types of informal settlements, the number goes up to 1.6 billion – which represents 1/4 of the world's urban population. By 2030, it's estimated that 1 in 4 people on the planet will live in a slum or other informal settlement.

**Term 3**

**Medieval Monarchs**



Medieval England was led by eight Medieval kings and one queen. Medieval England started in 1066 with William the Conqueror gaining the English throne after his victory at the Battle of Hastings. With lands to conquer, rebellions to quash and finances to raise, ruling over medieval England was no mean feat. Some monarchs flourished, while others floundered. The children will learn about Medieval England to 1377.

**Term 4**

**Earth's Biomes**



Biomes are very large ecological areas on the earth's surface, with fauna and flora (animals and plants) adapting to their environment. Biomes are often defined by abiotic factors such as temperature, climate, relief, geology, soils and vegetation. There are five major categories of biomes on earth; Desert Biomes, Aquatic Biomes, Forest Biomes, Grassland Biomes and Tundra Biomes. Biomes play a crucial role in sustaining life on earth.

**Term 5**

**Plymouth – A City of Voyage and Discovery**



Plymouth established its reputation both as a centre for voyage and discovery, and for its military importance. The origins of Plymouth can be traced back to Saxon times, more than a thousand years ago, and its history very much reflects its maritime location.

**Term 6**

**Energy and Sustainability**



An increased demand for resources such as energy, food and fuel means that developing sustainable resources is critical to protect the environment for future generations. A resource is anything that is useful to people. Natural resources can be divided into renewable and non-renewable resources. A renewable resource can be used again and again, so is more sustainable, e.g. water, wind, wood, sun and wave energy. A non-renewable resource will eventually run out, so it is not sustainable in the long run, e.g. fossil fuels such as gas, oil and coal. There is only a finite supply of non-renewable



School uniform should consist of a white polo shirt, Academy jumper/cardigan with logo on, dark grey trousers/shorts/skirt/dress, grey or navy tights and/or white, grey or black socks and black school shoes please.

Please ensure your child's name is on all of their items of clothing and belongings, thank you.

During Early Morning Learning and Drop Everything and Read, children will get the chance to quiz and change their reading books at the library.

**Rewards:**

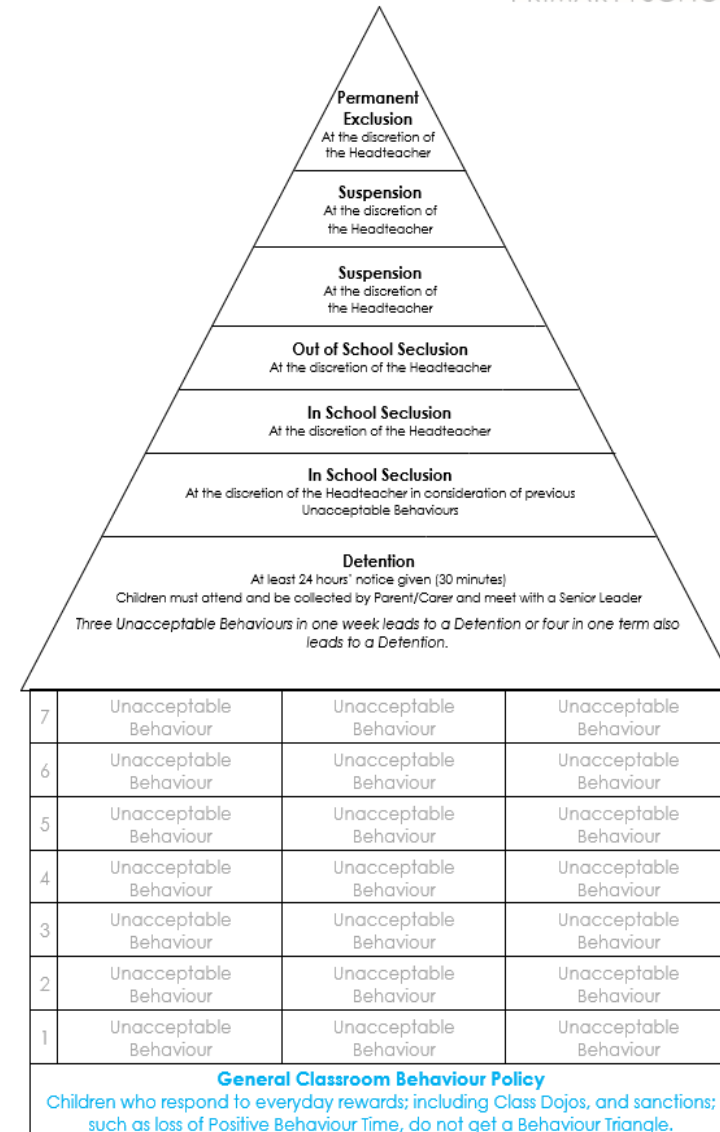
For following our Academy Rules or for great learning children are given Dojo points.

Every Friday we reveal who the Dojo Leader of the Week is and give that person a Headteacher's Prize.

For completing Home Learning, Dojos are awarded.

Positive Behaviour time; children who have been fantastic learners all week will get all thirty minutes of their Positive Behaviour time.

**Unacceptable Behaviour Chart**



# MAP MANNERS



I'm sorry

Good morning

Thank you

Please

May I?

Excuse me

Good afternoon

You're welcome



## End of the Day

Please collect your child from the hall door. Adults will send children out one by one and in the interests of child safety, will ensure that every child goes to the adult who is collecting them.

Please ensure that you supervise your child once you have collected them and do not leave them unattended, especially near to the Trim Trail.

Please also make sure that your children do not visit the rabbits or chickens without a member of Marine Academy Primary staff.

## Snack

Children can bring in their own healthy snack for breaktime.

This can be a piece of fruit or vegetable but no sweets or chocolate please, thank you.

Please ensure names are on water bottles and lunchboxes. These must be taken home every day please.

## Home Learning

Home Learning will be set on a Friday and should be handed in by Thursday please.

Home Learning will consist of different activities linking to our topics and we hope that children will read at home five times each week. Please ensure you log when your child has read at home on GoRead.

We are very excited to be teaching your children this year! If you need to communicate with us then please do not hesitate to email us on:

[year5@marineacademy.org.uk](mailto:year5@marineacademy.org.uk)