



the
university
school



PROSPECTUS

MARINE ACADEMY PLYMOUTH

LEADERSHIP, RESILIENCE AND ASPIRATION



PRINCIPAL'S MESSAGE

Thank you for your interest in Marine Academy Plymouth.

Since my appointment as Principal in March 2019 I have really been able to start shaping the school in a way that I feel reflects my own personal beliefs and values.

Choosing which secondary school to send your child to can be a time of anxiety and doubt; I felt that very same feeling recently when choosing which primary school to send my daughter to and it's important to select a school that aligns with your own views on what great education looks like. Hopefully this prospectus will give you a flavour of what we believe here at Marine Academy and what we offer the children who study here.

What I can say is that Marine Academy will be unlike any other school in the city. Our expectations around

behaviour will be higher than all other schools in the city; you may even consider them to be old-fashioned. These values underpin everything we do.

For me, a great school is about developing character; our students are expected to say 'Good Morning' or 'Good Afternoon' as they pass a member of staff; they are expected to look smart; they are expected to hold doors open for others and be mindful of their manners at all times; they are expected to listen when others are talking. We are a school that looks to develop leadership, resilience and aspiration as our three character traits and we also believe that confidence, courtesy, respect and empathy have a fundamental part to play in shaping our children.

Though we accept no excuses for poor behaviour, we are equally relentless in rewarding students for doing the right thing. My firm belief is that a child's happiness is linked directly to having firm boundaries,



consistency, regular routines and being praised for success.

Finally, our curriculum is a highly academic one and its central purpose is to allow every child to have the opportunity to attend university when they leave us. We are spending more time teaching languages than most other schools because we believe that learning another language is a key skill, one that unlocks the cultural capital that allows children to go to universities such as Oxford and Cambridge. This is our goal for the children of this school.

Yours Sincerely,

Leigh Withers

*Leigh Withers,
Principal*





MARINE ACADEMY
PLYMOUTH

WHY CHOOSE MARINE ACADEMY PLYMOUTH

ETHOS

OUR ETHOS IS UNDERPINNED BY OUR
CORE BELIEF:
WE BELIEVE EVERY CHILD DESERVES A
WORLD CLASS EDUCATION

WHICH WILL BE DEMONSTRATED BY:
EVERY STUDENT AT MARINE ACADEMY
WILL HAVE THE OPTION TO GO TO
UNIVERSITY WHEN THEY LEAVE

We will achieve these things by delivering a challenging and academic curriculum in a culture of aspiration and the highest of expectations. For us, there are no acceptable excuses for failure.

We are proud to be different here at Marine Academy Plymouth. Our belief, first and foremost, is that excellent qualifications and the option to access university are the two most important indicators of student success.

This is not at the cost of happiness and wellbeing. Quite simply, we want to produce the next generation of leaders, and for more of our students to go on to Russell Group Universities* than any other school in the country.

We are proud to champion traditional academic subjects and to expect politeness and the highest levels of discipline from our students. We believe that the ability to speak another language and to play a musical instrument is vitally important and our new curriculum for 2019/20 will reflect that belief.

At Marine Academy our aim is to give every student an education that is comparable to the highest performing private schools in the country. Discipline, leadership, resilience and aspiration are our core pillars that run through everything we do.

Our new curriculum is highly academic, with children studying at least three lessons of languages every week, alongside the opportunity to study subjects such as economics, classics, politics, psychology and Latin. Sporting excellence, music mastery, art and drama are areas that our students will excel in and we will provide the curriculum time and opportunities to develop their skills and passion.

We ask a lot of our students and parents. We will not tolerate poor behaviour, we will not accept anything but 100% effort, 100% of the time from our students, and we expect parents to support us in achieving this.

We believe that how you look, how you interact with others, how you enter and leave a classroom, how you speak to staff, how you approach work and homework is of huge importance. Manners, respect and empathy are characteristics we value and demand. We believe that our students' wellbeing and happiness comes from having strict boundaries, emotional support and academic success. Our job here is a simple one - to enable all students to achieve great things. **Our mission is even simpler - to become the highest performing school in the country within five years.**

**Russell Group Universities include Exeter, Oxford, Cambridge, Bristol, Cardiff, Southampton, Imperial College London, Manchester, Edinburgh and Belfast*



CORE PURPOSE

**OUR JOB HERE IS A
SIMPLE ONE - TO
ENABLE ALL
STUDENTS TO ACHIEVE
GREAT THINGS**



LEADERSHIP, RESILIENCE A



These three characteristics underpin everything we do; they are the foundations for future success. They are characteristics demonstrated by the leaders in any field of life, whether it's academic, political, sporting or within the creative arts. We believe that developing these traits means that our students will be confident, humble, empathetic, determined and have a will to succeed.

These characteristics will be grown through our bespoke PSHE programme that we have designed to meet the needs of our students; a programme delivered by subject specialists, free from the burden of examination - where its one goal is to develop successful, happy and well-rounded human beings. Leadership, resilience and aspiration will be grown through our assembly programme and our excellent extracurricular offer. They will be grown



AND ASPIRATION

through our unique Leadership Pathway that ensures all students follow a programme that develops their leadership skills. But most importantly, they will be grown through every interaction we have in our school community - how we behave and talk to each other will be emblematic of these three core characteristics.

OUR THREE CORE VALUES:

- LEADERSHIP
- RESILIENCE
- ASPIRATION

OPPORTUNITIES

Performing Arts

All our Year 7s receive free 1-2-1 music tuition. Our intention is that every student who leaves us in Year 13 will be able to play a musical instrument and be confident in speaking in another language. Students receive separate music and drama lessons every week - we do not blend these subjects together as we feel they are vitally important parts of our children's education. The opportunity to star in shows and concerts will be made available for all students. Though we are an academic school this is not at the cost of the performing arts and we wish to rival the highest performing specialist schools in this area.

Along with our Sports Academy we will also be looking to open a Performing Arts Academy, again with the opportunity for students from across the city to join us in Year 12 and use our excellent facilities to excel in drama, dance and music.

Rewards

Our students are rewarded every day. Student of the week, attendance, attitude to learning, academic attainment, subject awards, positive contribution to school, sporting and performing arts 'colours', leadership roles and many others all have their own unique enamel badges that our students wear with pride. We issue praise points as a matter of course for students who 'do the right thing' in school. Whether that's completing homework, wearing uniform correctly or simply upholding our demand of politeness at all times.

We display these successes with pride and the celebration of achievement is hugely important to us as we create a culture of genuine excellence at all levels. Our children will be more confident through our comprehensive and highly visible reward system and this confidence will further enable the great successes we expect all of our students to achieve.



Our promise:

- Free breakfast for every child
- Regular Russell Group University visits for all children
- 1-2-1 music tuition for all Year 7s
- Classic text reading for all Year 7s
- Our mandatory leadership offer for all children
- Three lessons of French or Spanish every week for most children
- Residential and trip visits for all children

SEND AND INCLUSION

SEND and Inclusion

We have our very own SEND provision space called The Wellbeing Zone. In this purpose-built area the needs of students with SEN and literacy needs are met. It is also a place where help and support can be offered to students who just require a helping hand in an increasingly complex world. We ensure that our curriculum for SEN students is not a second class one - they will be taught to the same high standards and be expected to achieve as highly as all other students. We accept no excuses but will ensure that support is in place that will allow your child to succeed in every subject.

Our safeguarding team also ensures that support is on hand for all of our children and we work tirelessly to liaise with you at home to ensure all appropriate arrangements are in place.



**WE BELIEVE EVERY STUDENT HAS THE ABILITY TO
GO TO UNIVERSITY**

THE MARINE ACADEMY PLYMOUTH CURRICULUM

HOW OUR STUDENTS LEARN

Our vision at Marine Academy is to deliver a knowledge-rich curriculum that is cohesive, cumulative and highly sequenced. It is academic, rigorous and challenging, and designed with long-term recall in mind; students' knowledge, skills and understanding are cemented by frequent and systematic revisiting.

Our school year will be divided into three twelve week cycles. Each cycle will comprise of ten teaching weeks, during which students will cover new topics in preparation for examination at the end of Years 11 and 13.



Curriculum - what we study

Our students will follow a two week timetable which allows for a broad and enriching curriculum to be covered. There will be a clear emphasis on traditional subjects such as English, maths, science, history and geography but we are also allowing far more curriculum time for languages than the vast majority of other schools. In September all students will study both French and Spanish but by the end of the first half term, they will choose to specialise in one, right through to examination in Year 11.

Sporting excellence and the performing arts are also a huge part of our offering here at Marine Academy Plymouth and we ensure that students are given the opportunity to excel in these areas. It is our intention to have both a Sports Academy and a Performing Arts Academy in place for September 2020, meaning that students will be able to take pathways that allow them to shine in these areas.

The first lesson of every cycle is a contextual lesson where the teacher outlines what will be covered within the cycle and how it will prepare students for final examination. In the first week an assessment will take place to establish each student's knowledge levels; this will then be repeated again in week ten to assess improvement.

The eleventh week of each cycle is an assessment week when all students in Years 7-13 complete exams and other assessments in every subject to analyse their strengths and weaknesses in the current and previous cycles. In the twelfth week, known as Super Teaching Week, teachers will re-teach areas that students have struggled with in their assessments, ensuring all gaps in knowledge are filled.

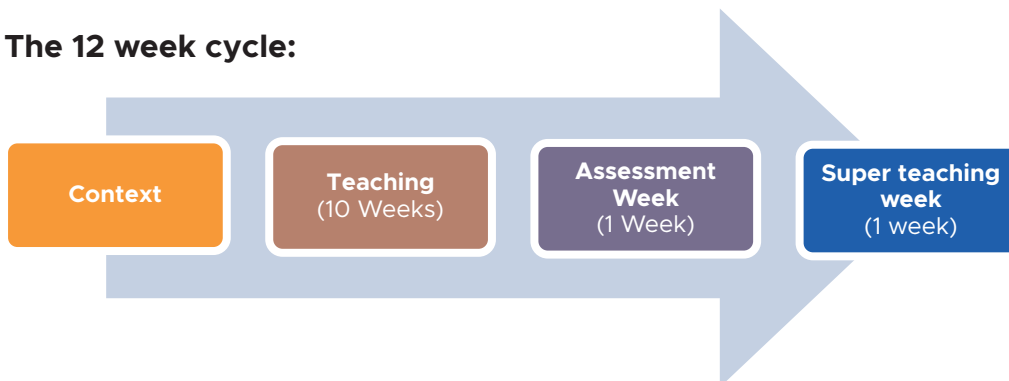
Homework is totally aligned against our assessments, meaning that everything a student learns will allow them to excel in robust and standardised assessment. Our students will be enabled to achieve grades comparable to the highest performing students across the country.

Our curriculum has been structured consistently across all subjects. This has been done to make sure our school structures are as efficient as possible to develop students' knowledge and skills.



HOME TO THE HARDEST WORKING STUDENTS IN THE UK

The 12 week cycle:



THE SEVEN YEAR JOURNEY AT MA

When your child joins us in Year 7, we very much see that as the start of a seven year journey through to Year 13. Our sixth form curriculum is also going through change so that it aligns itself against the high academic standards set further down the school. We want our children to move on to the top universities in the country and our sixth form offer is the final step to that destination.

Increasingly our offer includes more of a focus around traditional A-Level qualifications as well as robust Level 3 equivalents in a number of other subjects. Leadership is also a large part of what makes our sixth form so special - not only will we produce highly qualified individuals, we also continue to shape character through a whole range of opportunities that our older students enjoy.

Sport and Outdoor Curriculum

Sporting excellence is a major focus for us here at Marine Academy Plymouth. In September 2020 we are looking to open our own Sports Academy where students from across the city can join us in Year 12 to study whilst competing for our successful teams in a range of different sports. Across the whole school we are investing in sport and PE to the extent that we wish to have highly competitive girls and boys teams in football, netball and rugby. This model is again based on the highest performing private schools in the country - we will aim to excel in these traditional sports but will also seek to develop the next generation of sports men and women in fields such as rowing, tennis and basketball.

Our outdoor curriculum is also growing. All students will be encouraged to take the Duke Of Edinburgh Award as part of our leadership offer but we will also compete in events such as Ten Tors and offer kayaking, orienteering and other outdoor pursuits as part of our standard provision.



ARINE ACADEMY PLYMOUTH

A photograph of two young men in school uniforms sitting on a green sofa. They are both wearing white shirts, dark ties, and dark trousers. They are engaged in a conversation, with one man gesturing with his hands. They are wearing lanyards with 'STUDENT' and 'INSOLIS' written on them. The background shows a window with a view of a computer lab.

**PREPARING OUR
STUDENTS FOR
UNIVERSITY**

A WORLD OF OPPORTUNITY

Opportunity

As well as our leadership offer we ensure students receive enriching experiences outside of the main curriculum.

University Visits

University visits are a key part of what we expect every child to experience. We believe that our children deserve the opportunity of visiting the top universities in the country so they understand what life at university is like. We work with The Brilliant Club who help develop study skills in children that will allow them to succeed at the highest tier of education as well as generating a confidence and a self-belief in their own academic ability. We want to

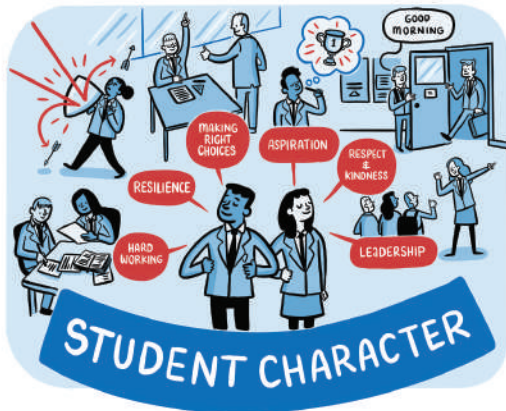
remove all barriers that prevent children from succeeding. Experiencing what university is actually like is one of them.

Broadening Horizons

We offer exciting trips abroad which have recently seen us visit places such as Tanzania and Kenya. Extracurricular activity is a staple of life here at the school, as we ensure that our students have the kind of cultural opportunities that are often seen as the preserve of the elite.

Reading

Reading plays a huge part in what we do here at Marine Academy Plymouth and in Year 7 ALL



students will read classic texts, with their tutor, during registration. They will be reading texts such as Pride and Prejudice and The War Of The Worlds. Before registration, from 7.45am, they can come to our Rise and Read groups where they read more contemporary literature, as a group, with their peers. We also provide free breakfasts for every student every day from 7.45am - 8.25am.

Partnership

We are proud to be working in partnership with the Ted Wragg Trust, who share our relentless focus on transforming lives through learning by delivering outstanding outcomes for every student, regardless of their background.

KEY BELIEFS

EVERY STUDENT SHOULD HAVE THE OPPORTUNITY TO GO TO UNIVERSITY

VISION 2025

The graphic features a large blue arrow pointing down to a scroll with the text 'EVERY STUDENT SHOULD HAVE THE OPPORTUNITY TO GO TO UNIVERSITY'. To the left, three people hold a sign with a star. Below the scroll, two students with backpacks walk past a school building. The text 'VISION 2025' is written in large, stylized letters at the bottom.

CURRICULUM

EXTENDED WRITING
KNOWLEDGE RICH
PERSONAL GROWTH & TOLERANCE
PATH TO UNIVERSITY

The graphic shows a classroom scene with a teacher at a computer, a student writing, and another student reading. A path leads from the classroom towards a university building. Callout boxes highlight 'EXTENDED WRITING', 'KNOWLEDGE RICH', 'PERSONAL GROWTH & TOLERANCE', and 'PATH TO UNIVERSITY'.

NARROWING THE GAP

INCLUSION FOR ALL
NO EXCUSES EVERYONE SUCCEEDS
WELLBEING ZONE
BESPOKE INTERVENTIONS
I'LL MAKE IT TO FIT YOU

The graphic depicts a person in a wheelchair climbing a ladder to reach a group of people on a higher level. Callout boxes include 'INCLUSION FOR ALL', 'NO EXCUSES EVERYONE SUCCEEDS', 'WELLBEING ZONE', 'BESPOKE INTERVENTIONS', and 'I'LL MAKE IT TO FIT YOU'.

COMMUNITY

WORKING TOGETHER WITH LOCAL PRIMARY SCHOOLS
PARTNERSHIPS WITH LOCAL BUSINESSES
PARENT GROUP
SUPPORTING LOCAL CHARITIES
£1,000.00

The graphic shows a group of diverse people, including a parent group and a charity representative holding a £1,000.00 donation sign. Callout boxes mention 'WORKING TOGETHER WITH LOCAL PRIMARY SCHOOLS', 'PARTNERSHIPS WITH LOCAL BUSINESSES', 'PARENT GROUP', and 'SUPPORTING LOCAL CHARITIES'.

OPPORTUNITY

TRIPS ABROAD
UNIVERSITY VISITS
DUKE OF EDINBURGH AWARDS
SPORTING EXCELLENCE

The graphic shows a student with a backpack looking at a signpost with arrows pointing to 'TRIPS ABROAD', 'UNIVERSITY VISITS', 'DUKE OF EDINBURGH AWARDS', and 'SPORTING EXCELLENCE'. The background features a university building and various outdoor activities.



the
university
school

LEADERSHIP, RESILIENCE AND ASPIRATION



CALL US: 01752 213939

Email: info@marineacademy.org.uk
www.marineacademy.org.uk



Marine Academy Plymouth

18 Trevithick Rd, St Budeaux, Plymouth PL5 2AF